

# Rotor 66

- [Français](#)
- [English](#)

Downloadable files

×

**Open access**

[Git project](#)

## About

Rotor 66 is part of a 51 centimeter-diameter, five-stage compressor having a design weight flow of 29.7 kilograms per second with a pressure ratio of 9.27. Performance data obtained from tests indicated that the first stage was not meeting its design performance.

- Original technical report <sup>[1]</sup>:

```
@TechReport{urasek1976design,  
  author      = {Urasek, Donald C. and Steinke, Ronald J. and Lewis,  
George W.},  
  date        = {1976},  
  institution = {NASA Lewis Research Center Cleveland, OH, United  
States},  
  title       = {Performance of inlet stage of transonic compressor},  
  number      = {NASA-TM X-3345},  
  url         = {https://ntrs.nasa.gov/citations/19760009935},  
}
```

- Picture :



Fig. 1 <https://catalog.archives.gov/id/17423368>

- `@Misc{brown1974records,`  
author = {Brown, M.},  
title = {First stage rotor wheel from 5 stage compressor. {R}ecords of  
the {N}ational {A}eronautics and {S}pace {A}dministration, 1903 - 2006.  
{P}hotographs relating to agency activities, facilities and personnel,  
1973 - 2013},  
year = {1974},  
url = {<https://catalog.archives.gov/id/17423368>}}

### Useful documents

- [downloadable models](#) (Git project)
  - NASA technical report  
(.pdf)
  - geometrical parameters file  
(.csv), usable as input of OpenMCAD<sup>[2]</sup> to generate reference blade models.

## Reference blade

The **reference blade** is defined with multiple-circular arc profiles<sup>[3]</sup> given in the original NASA report<sup>[1]</sup>. Corresponding models are computed with the open-source code OpenMCAD<sup>[2]</sup>.

## Geometry

The geometry of rotor 66 is described in the original NASA report by the following tables. The length are in centimeters and the angles in degrees.

TABLE IV. - BLADE GEOMETRY FOR ROTOR 66

| RP  | PERCENT RADII |        | BLADE ANGLES |       |       | DELTA INC | CONE ANGLE |        |
|-----|---------------|--------|--------------|-------|-------|-----------|------------|--------|
|     | SPAN          | RI     | RO           | KIC   | KTC   |           |            | KOC    |
| TIP | 0.            | 25.324 | 25.222       | 62.51 | 63.11 | 58.81     | 2.68       | -3.238 |
| 1   | 5.            | 24.794 | 24.657       | 61.59 | 62.04 | 57.92     | 2.93       | -4.225 |
| 2   | 10.           | 24.216 | 24.092       | 60.60 | 60.87 | 57.03     | 3.20       | -3.688 |
| 3   | 20.           | 23.041 | 22.962       | 58.61 | 58.47 | 55.18     | 3.75       | -2.213 |
| 4   | 30.           | 21.841 | 21.831       | 56.67 | 55.94 | 52.98     | 4.27       | -0.268 |
| 5   | 38.           | 20.866 | 20.927       | 55.14 | 53.75 | 50.75     | 4.69       | 1.522  |
| 6   | 46.           | 19.878 | 20.023       | 53.63 | 51.48 | 48.06     | 5.07       | 3.444  |
| 7   | 50.           | 19.378 | 19.571       | 52.87 | 50.29 | 46.46     | 5.26       | 4.458  |
| 8   | 70.           | 16.811 | 17.310       | 48.96 | 44.21 | 35.52     | 6.08       | 10.070 |
| 9   | 80.           | 15.470 | 16.180       | 46.91 | 40.93 | 27.52     | 6.39       | 13.261 |
| 10  | 90.           | 14.079 | 15.049       | 44.75 | 37.49 | 17.34     | 6.59       | 16.722 |
| 11  | 95.           | 13.361 | 14.484       | 43.60 | 35.80 | 11.47     | 6.65       | 18.571 |
| HUB | 100.          | 12.700 | 13.919       | 42.52 | 34.26 | 5.34      | 6.68       | 19.462 |

| RP  | BLADE THICKNESSES |       |       | AXIAL DIMENSIONS |       |       |       |
|-----|-------------------|-------|-------|------------------|-------|-------|-------|
|     | TI                | TM    | TO    | ZIC              | ZMC   | ZTC   | ZOC   |
| TIP | 0.025             | 0.115 | 0.025 | 0.808            | 1.689 | 1.936 | 2.604 |
| 1   | 0.028             | 0.126 | 0.028 | 0.778            | 1.688 | 1.910 | 2.636 |
| 2   | 0.030             | 0.138 | 0.030 | 0.746            | 1.687 | 1.879 | 2.667 |
| 3   | 0.035             | 0.161 | 0.035 | 0.681            | 1.684 | 1.809 | 2.730 |
| 4   | 0.041             | 0.184 | 0.041 | 0.615            | 1.680 | 1.726 | 2.795 |
| 5   | 0.044             | 0.202 | 0.044 | 0.561            | 1.677 | 1.650 | 2.852 |
| 6   | 0.048             | 0.218 | 0.048 | 0.505            | 1.672 | 1.565 | 2.913 |
| 7   | 0.050             | 0.227 | 0.050 | 0.476            | 1.670 | 1.518 | 2.946 |
| 8   | 0.059             | 0.265 | 0.059 | 0.320            | 1.650 | 1.244 | 3.130 |
| 9   | 0.062             | 0.282 | 0.062 | 0.226            | 1.635 | 1.075 | 3.237 |
| 10  | 0.066             | 0.298 | 0.066 | 0.117            | 1.616 | 0.879 | 3.347 |
| 11  | 0.068             | 0.305 | 0.068 | 0.057            | 1.606 | 0.772 | 3.399 |
| HUB | 0.069             | 0.312 | 0.069 | 0.000            | 1.596 | 0.672 | 3.450 |

## Aerodynamic design

|                  | unit    | values  |
|------------------|---------|---------|
| pressure ratio   | [-]     | 1.61    |
| mass flow        | [kg/s]  | 29.7    |
| tip speed        | [m/s]   | 426     |
| tip solidity     | [-]     | 1.4     |
| aspect ratio     | [-]     | 3.1     |
| number of blades | [-]     | 57      |
| rotative speed   | [rad/s] | 1679.94 |

## Material properties

The original material of the rotor 66 is not defined in the NASA report. A generic titanium Ti-6Al-4V is considered:

|                 | unité | valeurs   |
|-----------------|-------|-----------|
| alloy           | [-]   | Ti-6Al-4V |
| Young's modulus | [GPa] | 108       |

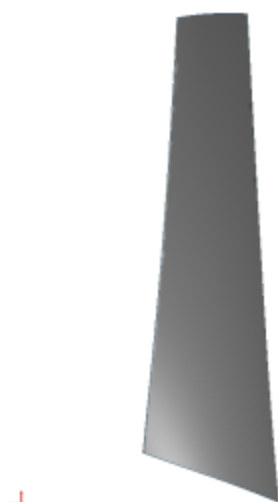
|                        | <b>unité</b>         | <b>valeurs</b> |
|------------------------|----------------------|----------------|
| <b>density</b>         | [kg/m <sup>3</sup> ] | 4400           |
| <b>Poisson's ratio</b> | [-]                  | 0.34           |
| <b>yield stress</b>    | [GPa]                | 0.824          |

## CAD model

The CAD model is computed with the open source code OpenMCAD<sup>[2]</sup>.



pressure side



suction side

## Natural frequencies

First three natural frequencies (with clamped root) for the mesh computed with OpenMCAD<sup>[2]</sup>:

| <b>Mode</b> | <b>Type</b> | <b>Natural angular frequency (rad/sec)</b> | <b>Natural frequency (Hz)</b> |
|-------------|-------------|--|-------------------------------|
| 1           | 1B          | 1249.77                                    | 198.91                        |
| 2           | 2B          | 4502.58                                    | 716.61                        |
| 3           | 1T          | 7703.69                                    | 1226.08                       |

## Initial blade

The **initial blade** is defined with in-house LAVA parameters<sup>[4]</sup> computed from the reference blade CAD model. The initial blade is usually used as starting point for an optimization process. Its geometry is similar to the one of the reference blade.

## Natural frequencies

First three natural frequencies (with clamped root)

- from the whole mesh:

| Mode | Type | Natural angular frequency (rad/sec) | Natural frequency (Hz) |
|------|------|-------------------------------------|------------------------|
| 1    | 1B   | 1248.51                             | 198.71                 |
| 2    | 2B   | 4487.89                             | 714.27                 |
| 3    | 1T   | 7721.85                             | 1228.97                |

- from the reduced order model:

| Mode | Type | Natural angular frequency (rad/sec) | Natural frequency (Hz) |
|------|------|-------------------------------------|------------------------|
| 1    | 1B   | 1248.53                             | 198.71                 |
| 2    | 2B   | 4488.92                             | 714.43                 |
| 3    | 1T   | 7723.73                             | 1229.27                |

Fichiers téléchargeables

×

## Libre accès

[lien vers le projet Git](#)

## À propos

Le rotor 66 fait partie d'un compresseur à cinq étages de 51 centimètres de diamètre ayant un débit nominal de 29,7 kilogrammes par seconde et un taux de compression de 9,27. Les données de performance obtenues lors de tests ont indiqué que le premier étage n'atteignait pas ses performances de conception.

- Rapport technique original <sup>[1]</sup>:

```
@TechReport{urasek1976design,
  author      = {Urasek, Donald C. and Steinke, Ronald J. and Lewis,
George W.},
  date        = {1976},
  institution = {NASA Lewis Research Center Cleveland, OH, United
States},
  title       = {Performance of inlet stage of transonic compressor},
  number      = {NASA-TM X-3345},
  url         = {https://ntrs.nasa.gov/citations/19760009935},
```

}

- Photographie :



Fig. 1 <https://catalog.archives.gov/id/17423368>

- `@Misc{brown1974records,`  
author = {Brown, M.},  
title = {First stage rotor wheel from 5 stage compressor. {R}ecords of  
the {N}ational {A}eronautics and {S}pace {A}dministration, 1903 - 2006.  
{P}hotographs relating to agency activities, facilities and personnel,  
1973 - 2013},  
year = {1974},  
url = {<https://catalog.archives.gov/id/17423368>}

### Documents utiles

- [modèles téléchargeables](#) (lien vers projet Git)
  - rapport technique original de la NASA (.pdf)
  - fichier de paramètres géométriques (.csv), utilisable en entrée de OpenMCAD<sup>[2]</sup> pour générer l'aube de référence

## Aube de référence

L'**aube de référence** est définie par des profils de type arcs circulaires multiples<sup>[3]</sup>, donnés dans le rapport technique original de la NASA<sup>[1]</sup>. Les modèles associés sont obtenus avec le code en libre accès OpenMCAD<sup>[2]</sup>.

## Géométrie

La géométrie du rotor 66 est décrite dans le [rapport d'origine de la NASA](#) par les tableaux suivants. Les grandeurs sont en centimètres et en degrés.

TABLE IV. - BLADE GEOMETRY FOR ROTOR 66

| RP  | PERCENT |        | RADII  |       | BLADE ANGLES |       |      | DELTA  | CONE |
|-----|---------|--------|--------|-------|--------------|-------|------|--------|------|
|     | SPAN    | RI     | RO     | KIC   | KTC          | KOC   | INC  | ANGLE  |      |
| TIP | 0.      | 25.324 | 25.222 | 62.51 | 63.11        | 58.81 | 2.68 | -3.238 |      |
| 1   | 5.      | 24.794 | 24.657 | 61.59 | 62.04        | 57.92 | 2.93 | -4.225 |      |
| 2   | 10.     | 24.216 | 24.092 | 60.60 | 60.87        | 57.03 | 3.20 | -3.688 |      |
| 3   | 20.     | 23.041 | 22.962 | 58.61 | 58.47        | 55.18 | 3.75 | -2.213 |      |
| 4   | 30.     | 21.841 | 21.831 | 56.67 | 55.94        | 52.98 | 4.27 | -0.268 |      |
| 5   | 38.     | 20.866 | 20.927 | 55.14 | 53.75        | 50.75 | 4.69 | 1.522  |      |
| 6   | 46.     | 19.878 | 20.023 | 53.63 | 51.48        | 48.06 | 5.07 | 3.444  |      |
| 7   | 50.     | 19.378 | 19.571 | 52.87 | 50.29        | 46.46 | 5.26 | 4.458  |      |
| 8   | 70.     | 16.811 | 17.310 | 48.96 | 44.21        | 35.52 | 6.08 | 10.070 |      |
| 9   | 80.     | 15.470 | 16.180 | 46.91 | 40.93        | 27.52 | 6.39 | 13.261 |      |
| 10  | 90.     | 14.079 | 15.049 | 44.75 | 37.49        | 17.34 | 6.59 | 16.722 |      |
| 11  | 95.     | 13.361 | 14.484 | 43.60 | 35.80        | 11.47 | 6.65 | 18.571 |      |
| HUB | 100.    | 12.700 | 13.919 | 42.52 | 34.26        | 5.34  | 6.68 | 19.462 |      |

| RP  | BLADE THICKNESSES |       |       | AXIAL DIMENSIONS |       |       |       |
|-----|-------------------|-------|-------|------------------|-------|-------|-------|
|     | TI                | TM    | TO    | ZIC              | ZMC   | ZTC   | ZOC   |
| TIP | 0.025             | 0.115 | 0.025 | 0.808            | 1.689 | 1.936 | 2.604 |
| 1   | 0.028             | 0.126 | 0.028 | 0.778            | 1.688 | 1.910 | 2.636 |
| 2   | 0.030             | 0.138 | 0.030 | 0.746            | 1.687 | 1.879 | 2.667 |
| 3   | 0.035             | 0.161 | 0.035 | 0.681            | 1.684 | 1.809 | 2.730 |
| 4   | 0.041             | 0.184 | 0.041 | 0.615            | 1.680 | 1.726 | 2.795 |
| 5   | 0.044             | 0.202 | 0.044 | 0.561            | 1.677 | 1.650 | 2.852 |
| 6   | 0.048             | 0.218 | 0.048 | 0.505            | 1.672 | 1.565 | 2.913 |
| 7   | 0.050             | 0.227 | 0.050 | 0.476            | 1.670 | 1.518 | 2.946 |
| 8   | 0.059             | 0.265 | 0.059 | 0.320            | 1.650 | 1.244 | 3.130 |
| 9   | 0.062             | 0.282 | 0.062 | 0.226            | 1.635 | 1.075 | 3.237 |
| 10  | 0.066             | 0.298 | 0.066 | 0.117            | 1.616 | 0.879 | 3.347 |
| 11  | 0.068             | 0.305 | 0.068 | 0.057            | 1.606 | 0.772 | 3.399 |
| HUB | 0.069             | 0.312 | 0.069 | 0.000            | 1.596 | 0.672 | 3.450 |

## Caractéristiques aérodynamiques

|   | unités  | valeurs |
|---|---------|---------|
| <b>taux de compression</b>                                | [-]     | 1,61    |
| <b>débit massique</b>                                     | [kg/s]  | 29,7    |
| <b>vitesse en tête</b>                                    | [m/s]   | 426     |
| <b>solidité en tête</b>                                   | [-]     | 1,4     |
| <b>allongement</b>  | [-]     | 3,1     |
| <b>nombre d'aubes</b>                                     | [-]     | 57      |
| <b>vitesse de rotation nominale <math>\omega_n</math></b> | [rad/s] | 1679,94 |

## Propriétés matériau

Le matériau original du rotor 66 n'est pas défini dans le rapport de la NASA. Un alliage de titane Ti-6Al-4v est considéré :

|                               | unité                | valeurs   |
|-------------------------------|----------------------|-----------|
| <b>alliage</b>                | [-]                  | Ti-6Al-4v |
| <b>module d'Young</b>         | [GPa]                | 108       |
| <b>masse volumique</b>        | [kg/m <sup>3</sup> ] | 4400      |
| <b>coefficient de Poisson</b> | [-]                  | 0,34      |
| <b>limite élastique</b>       | [GPa]                | 0,824     |

## Modèle CAO

Le modèle CAO est obtenu avec OpenMCAD<sup>[2]</sup>.

intrados



extrados



## Fréquences propres

Fréquences des trois premiers modes (noeuds du pied d'aube encastres) pour le maillage obtenu avec OpenMCAD<sup>[2]</sup> :

| Mode | Type | Pulsation propre (rad/sec) | Fréquence propre (Hz) |
|------|------|----------------------------|-----------------------|
| 1    | 1F   | 1249,77                    | 198,907               |
| 2    | 2F   | 4502,58                    | 716,609               |
| 3    | 1T   | 7703,69                    | 1226,08               |

## Diagramme de Campbell

Évolution des fréquences propres des 3 premiers modes, en fonction de la vitesse de rotation, pour le maillage obtenu avec OpenMCAD<sup>[2]</sup>:

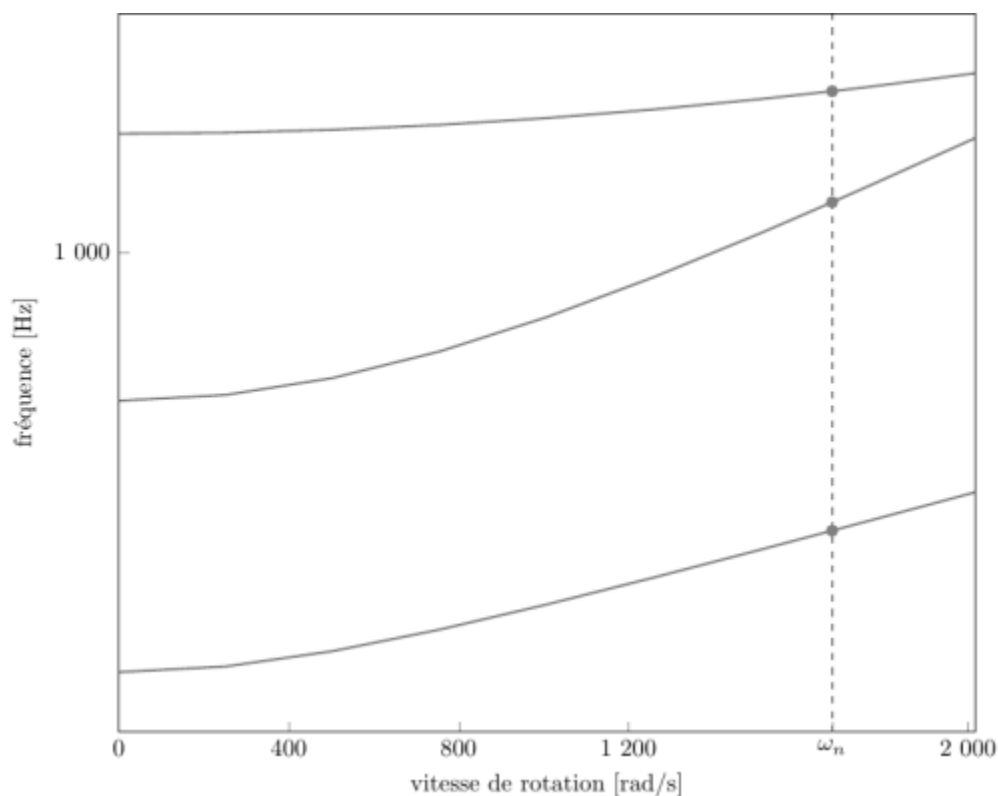


diagramme de Campbell calculé avec une précharge centrifuge linéaire, noeuds du pied d'aube encastres (vitesse nominale  $\omega_n = 1\,800$  rad/s)

- graphique (.pdf)
- données du Campbell (.csv)

## Aube initiale

L'**aube initiale** est définie par des paramètres spécifiques au LAVA<sup>[4]</sup> obtenus à partir du modèle CAO de l'aube de référence. L'aube initiale est classiquement utilisée comme point de départ dans le cadre de procédures d'optimisation; sa géométrie est similaire à celle de l'aube de référence.

## Fréquences propres

Fréquences des trois premiers modes (noeuds du pied d'aube encastrés),

- pour le maillage complet :

| Mode | Type | Pulsation propre (rad/sec) | Fréquence propre (Hz) |
|------|------|----------------------------|-----------------------|
| 1    | 1F   | 1248,51                    | 198,706               |
| 2    | 2F   | 4487,89                    | 714,27                |
| 3    | 1T   | 7721,85                    | 1228,97               |

- pour le modèle réduit :

| Mode | Type | Pulsation propre (rad/sec) | Fréquence propre (Hz) |
|------|------|----------------------------|-----------------------|
| 1    | 1F   | 1248,525                   | 198,709               |
| 2    | 2F   | 4488,921                   | 714,434               |
| 3    | 1T   | 7723,73                    | 1229,27               |

1. <sup>a, b, c, d</sup> Urasek D. C. *et al* «Performance of inlet stage of transonic compressor» 1976 [pdf](#)
2. <sup>a, b, c, d, e, f, g, h, i</sup> Kojtych S., Batailly A. «OpenMCAD, an open blade generator: from Multiple-Circular-Arc profiles to Computer-Aided Design model» 2022. [open source code](#)
3. <sup>a, b</sup> Crouse *et al*. «A computer program for composing compressor blading from simulated circular-arc elements on conical surfaces » 1969. NASA-TN-D-5437. [pdf](#)
4. <sup>a, b</sup> Kojtych S. *et al*. «Methodology for the Redesign of Compressor Blades Undergoing Nonlinear Structural Interactions: Application to Blade-Tip/Casing Contacts » 2022. Journal of Engineering for Gas Turbines and Power, Vol. 145, No. 5. [pdf](#)

Document issu de la page wiki:

[https://wiki.lava.polymtl.ca/public/modeles/rotor\\_66/accueil?rev=1722540237](https://wiki.lava.polymtl.ca/public/modeles/rotor_66/accueil?rev=1722540237)

Dernière mise à jour: **2024/08/01 15:23**